

MAKERS REFERENCE DRAWINGS (REV. 3)		
DRG. NO.	DESCRIPTION	NO.OFF
D-DC-01509a1	88/11kV 40MVA OLTC TRFR.	1
D-DC-01026a1	11kV 360A NECRT.	1
D-DC-011361	88kV S.A.	1
D-DC-01161	66kV S.A.	1
D-DC-010861	11kV S.A.	3
D-DC-013061	132kV 2500A 31.5kA BREAKER.	1
D-DC-014061	132kV 2500A 25kA ISOLATOR.	3
D-DC-012351	132kV 2500A 25kA C.T.	3
D-DC-0060	132kV P.I.	3
D-DC-0061	66kV P.I.	6
-	400 WATT FLOODLIGHT.	2
-	FLOODLIGHT LAMP HOLDER.	2

YARD STEELWORK SCHEDULE (ORIGINAL)					
DRG. NO.	REV.NO	NO.OFF	DESCRIPTION	STRUCTURE	BOLTS TOTAL
0.54/302	2	16	88kV C.T., V.T., & LIGHTNING MAST SUPT.	III	2,6 1817,6
0.54/306	2	16	88kV C.T., V.T., & L. MAST SUPT. CAP	55	2 912,0
0.54/482	8	6	88kV LINK SUPPORT	491	II 3012
0.54/3870	2	3	88kV BREAKER SUPPORT	248	NIL 744
7/8/208II	2	9	88kV P.J. CROSS ARM ASSEMBLY MK 'C'	34	0,5 30,5
D-CT-492	0	4	88kV 1800 HIGH LEVEL LINK & P.J. SUPT	665	II 2704,0
0.54/327	2	4	EARTHWIRE SUPPORT	128	8,7 546,8
0.54/340	1	4	LIGHTNING SPIKE	45	2,7 190,8
D-CT-57	0	2	LINK MOUNTED SA SUPPORT	174,5	2,2 353,4
TOTAL MASS IN kg. =					10591J

YARD STEELWORK SCHEDULE (REV. 1)					
DRG. No.	REV.No.	No.OFF	DESCRIPTION	STRUCTURE	BOLTS TOTAL
D-DT-5063 SHT.1	0	2	GALV. STEEL FIRE BARRIER MODULE 'A'	79	4J3 166,26
D-DT-5063 SHT.1	0	2	GALV. STEEL FIRE BARRIER MODULE 'B'	16,24	2,06 36,6
D-DT-5063 SHT.2	0	3	GALV. STEEL FIRE SUPPORT	288	7,3 885,9
D-DT-5200 SHT.2	0	1	132kV CIRCUIT BREAKER SUPPORT	245	- 245
D-DT-5206 SHT.3	0	4	88kV & 11kV V.T. SUPPORT	III	2,6 454,4
D-DT-5206 SHT.4	1	6	132kV C.T. & 88kV V.T. SUPPORT CAP	55	2 342
D-DT-5206 SHT.5	0	2	11kV V.T. SUPPORT CAP	114	1,7 231,4
0.54/305	2	4	LIGHTNING MAST SUPPORT 4m HIGH	181	4,2 740,8
D-DT-5213 SHT.5	2	2	CABLE END SUPPORT	468,72	- 937,44
TOTAL MASS IN kg. =					4039,8

YARD STEELWORK SCHEDULE (REV. 3)				
DRG. No.	No.OFF	DESCRIPTION	STRUCTURE	BOLTS TOTAL MASS
D-DT-5200 S2	1	132kV BREAKER SUPPORT	264,32	- 264,32
D-DT-5206 S3	3	MEDIUM EQUIPMENT SUPPORT	11,00	2,60 340,80
D-DT-5206 S5	3	MEDIUM EQUIPMENT SUPPORT CAP	55,00	2,00 170,00
D-DT-5213 S5	1	CABLE END SUPPORT	483,44	10,00 493,44
D-DT-5217 S3, 4 & 5	2	14m LIGHTNING/LIGHTNING MAST	404,00	- 808,00
0.54/482	1	88kV ISOLATOR SUPPORT	49,00	11,00 502,00
D-CT-492	3	88kV HIGH LEVEL ISOL. & P.J. SUPPORT	665,00	11,00 2028,00
7/8/208II	3	88kV CROSS ARM FOR 132kV P.J. MK BBE	30,50	- 91,50
TOTAL MASS IN kg. =				4699,06

MAKERS REFERENCE DRAWINGS (ORIGINAL)			
DRG. NO.	DESCRIPTION	E.N.C. NO.	NO. OFF
-	88/11kV 10MVA TRFR. BONAR LONG	-	1
-	11kV 355A N.E.C.R.T. B.B.T.	-	1
0.54/3814	88kV 2500A LINK R.C.P. CULLINAN	DSIO0005	7
0.54/3701	88kV 10kA S.A. B.B.T.	SLA00003	9
0.54/3698	66kV 10kA S.A. B.B.T.	LA 6	1
0.54/3956	11kV 1250A C.T. ASEA	SLA00002	3
0.54/3756	88kV 1250A C.T. ASEA	CT 91	9
0.54/3940	88kV V.T. ASEA	VT 50	3
0.54/3854	88kV 2500A SFG BREAKER B.B.	CBK00002	3
-	88kV P.J. CULLINAN	INS00006	51
-	22kV P.J. E.L.	DSIO0008	6

MAKERS REFERENCE DRAWINGS (REV. 1)			
DRG. No.	DESCRIPTION	E.N.C. No.	SAP. No. NO. OFF
-	88/11kV 10MVA TRFR.	-	170744 1
D-DC-0002 S1	11kV 360A NECRT	NEC504	182730 1
D-DC-0003	88kV 10kA S.A.	SLA 012	4532 3
D-DC-001	44kV 10kA S.A.	SLA 011	4562 1
D-DC-0008	11kV 10kA S.A.	SLA 011	4626 3
D-DC-0028 S1	132kV 2500A 31.5kA BRKR.	CBK 020	12720 1
D-DC-0032 S1	132kV 2500A 40kA ISOL.	DSIO08	12973 1
D-DC-0021 S1	132kV 2500A 25kA C.T.	BCT 023	180033 3
D-DC-0016 S1	88kV 110V 100/50VA V.T.	BCT 023	180090 3
D-DC-0020 S1	11kV 110V 100/50VA V.T.	BCT 023	8751 6
D-DT-6232	66kV P.J.	DSIO08	17527 12
-	400 WATT FLOODLIGHT	-	17536 13
-	FLOODLIGHT LAMP HOLDER	-	17551 13

- NOTES : (ORIGINAL & REV. 3)
1. ISOL. FRAMES MARKED 'A' TO BE THE SAME LEVEL
 2. ISOL. FRAMES MARKED 'B' TO BE THE SAME LEVEL
 3. ISOL. FRAMES MARKED 'C' TO BE THE SAME LEVEL
 4. ISOL. FRAMES MARKED 'D' TO BE THE SAME LEVEL
 5. ISOL. FRAMES MARKED 'E' TO BE THE SAME LEVEL

- NOTE : (REV. 1 & 3)
6. STRUCTURES SHALL BE ERECTED, ALIGNED, SQUARED, PLUMBED AND LEVELLED TO AN ACCURACY SPECIFIED IN:
SABS 1200 H 6.2.2/c/2 - CLASS II

7. FLOODLIGHTS (13 OFF), LIGHT SWITCH (1 OFF) AND 400 WATT WIDE BEAM WATERPROOF LIGHTS WITH CABLING AND CIRCUIT BREAKER 1 x 25A INSIDE CONTROL ROOM

8. ATTACHMENT HEIGHT FOR FLOODLIGHTS 6m AND FITTINGS ARE TO BE ANGLED AT 45° TO THE VERTICAL AND MOUNTED ON STEEL STRUCTURES

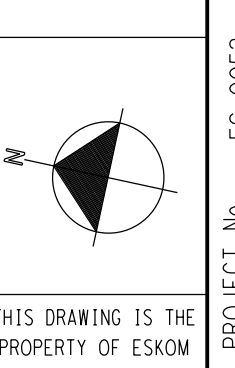
9. EXISTING 4 x 2.5m HIGH LIGHTNING MAST SUPPORTS TO BE REPOSITIONED AT A1, A2, A3 AND A4 BY SUBSTATION CONSTRUCTION. (REMAINING EARTHWIRE, SUPPORT, LIGHTNING SPIKE AND CAP TO BE MOUNTED ON NEW 4m HIGH SUPPORT)

10. 132kV ISOLATOR PHASE COUPLING TUBES WILL BE SHORTENED BY MANUFACTURER TO ACHIEVE 2400 BETWEEN PHASES. 132kV ISOLATOR BASE TO BE DRILLED AT 914 CENTRES FOR MOUNTING ON EXISTING 88kV SUPPORT SEE DRG. 0.54/482

11. 132kV ISOLATOR PHASE COUPLING TUBES WILL BE SHORTENED BY MANUFACTURER TO ACHIEVE 1800 BETWEEN PHASES. 132kV ISOLATOR BASE TO BE DRILLED AT 914 CENTRES FOR MOUNTING ON 88kV SUPPORT SEE DRG. D-CT-492

D-S1-1944	11kV SWITCH HOUSE
SHT07	CONTOUR PLAN
TRFR. PLINTH & SHED07	CON. PITT DETAILS
SHT07	BOUNDARY FENCE & SITE PLAN
SET1205	SECTIONS
SET1204	EARTHMAT LAYOUT
SET1203	FOUNDATION LAYOUT
DR-0200	CON. BUILD. LAYOUT
374	WALL UPSTAND DETAIL
370	STEEL DOOR DETAILS
369	ELECT. INSTALLATION
368	ROOF TRUSS DETAIL
360	SEC FENCE DTL SH 2
359	SEC FENCE DTL SH 1
358	SEC FENCE AROT SH 2
357	SEC FENCE AROT SH 1
58	MOD. SWITCH HOUSE
25	CON. ROOM ELEC. LAYOUT
24	CON. ROOM DETAILS
23	CON. ROOM BUILD. LAYOUT

REV	DATE	BY	CHKD	REVISION/REMARKS
1	01/01/2020	PA.V.	DS	ISSUED FOR TENDER
2	01/01/2020	PA.V.	DS	ISSUED FOR TENDER
3	01/01/2020	PA.V.	DS	ISSUED FOR TENDER
4	01/01/2020	PA.V.	DS	ISSUED FOR TENDER
5	01/01/2020	PA.V.	DS	ISSUED FOR TENDER
6	01/01/2020	PA.V.	DS	ISSUED FOR TENDER
7	01/01/2020	PA.V.	DS	ISSUED FOR TENDER
8	01/01/2020	PA.V.	DS	ISSUED FOR TENDER
9	01/01/2020	PA.V.	DS	ISSUED FOR TENDER
10	01/01/2020	PA.V.	DS	ISSUED FOR TENDER
11	01/01/2020	PA.V.	DS	ISSUED FOR TENDER
12	01/01/2020	PA.V.	DS	ISSUED FOR TENDER
13	01/01/2020	PA.V.	DS	ISSUED FOR TENDER
14	01/01/2020	PA.V.	DS	ISSUED FOR TENDER
15	01/01/2020	PA.V.	DS	ISSUED FOR TENDER
16	01/01/2020	PA.V.	DS	ISSUED FOR TENDER
17	01/01/2020	PA.V.	DS	ISSUED FOR TENDER
18	01/01/2020	PA.V.	DS	ISSUED FOR TENDER
19	01/01/2020	PA.V.	DS	ISSUED FOR TENDER
20	01/01/2020	PA.V.	DS	ISSUED FOR TENDER
21	01/01/2020	PA.V.	DS	ISSUED FOR TENDER
22	01/01/2020	PA.V.	DS	ISSUED FOR TENDER



Eskom
SANDPIT
88/11kV SUBSTATION
GENERAL ARRANGEMENT

THIS DRAWING SUPERCEDES
DRAWING NUMBER
D-CT-506 sht.2

DX-0020
SET 202